

PROCEDURE FOR STUDENTS IN MANDATED ISOLATION

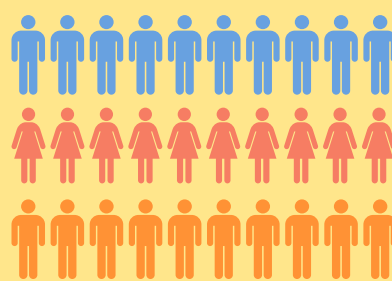


INTERNATIONAL
SCHOOL
OF LATVIA

PYP (PREK-G5)

ES PRINCIPAL'S CONFIRMATION

Confirmation received by ES Principal that a student will require isolation.



HOMEROOM TEACHERS



Homeroom teachers will communicate with the family on a daily basis, providing work that will keep students in self-isolation progressing with what is happening in the classroom to the fullest extent possible.

SPECIALIST TEACHERS

Specialist teachers will communicate with the family on days where they have that class

PYP COORDINATOR

PYP Coordinator will be available if needed to support teachers with any communication or other distance learning challenges.

STUDENT SUPPORT



Student Support Team Coordinator will coordinate with EAL and Learning Support departments to provide any needed support for students who would be receiving support from those departments if on campus.

PLEASE FIND MORE INFORMATION [HERE](#)
AND WWW.ISL.EDU.LV!