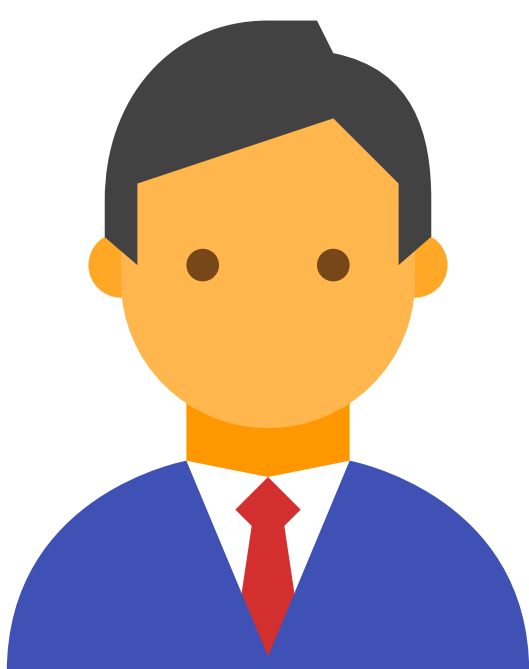




PROCEDURE FOR STUDENTS IN MANDATED ISOLATION

MYP (G6-10)



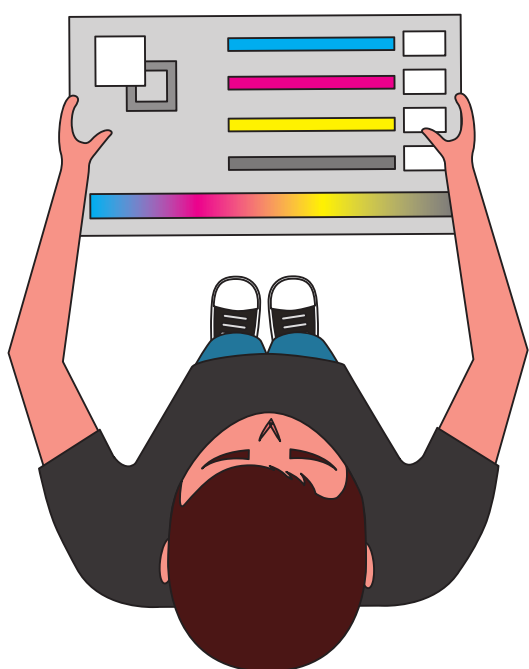
SS PRINCIPAL'S CONFIRMATION

Confirmation received by the SS Principal that a student will require isolation.

SS Principal provides a list of students who need to isolate for Teachers to access.



ADVISOR AND SUBJECT TEACHERS



Advisor and Subject Teachers to check in with the isolating student twice per week to ensure any questions arising are answered, and to review work for coming classes/ major deadlines.

PLEASE FIND MORE INFORMATION [HERE](#), IN [MANAGEBAC](#) AND WWW.ISL.EDU.LV!